



Wireless Control Manual

Dehumidifiers

with and without Pumps

BHD-22A

BHD-35A

BHD-50A

BHDP-50A

BHDP-60A



CONTENTS

① SPECIFICATION.....	1
② PRECAUTIONS.....	1
③ DOWNLOAD AND INSTALL APP.....	2
④ USER REGISTRATION	2
⑤ NETWORK CONFIGURATION.....	3
⑥ HOW TO USE APP.....	7
⑦ SPECIAL FUNCTIONS.....	8
⑧ APP DECLARATION.....	10

DECLARATION OF CONFORMITY

Hereby, we declare that this Smart kit is in compliance with the essential requirements and other relevant provisions of Directive 2014/53/EU. A copy of the full DoC is attached.

1 SPECIFICATION

Unit model:XXXXXX

WIFI Module Model: EU-SK105/US-SK105

Standard: IEEE 802. 11b/g/n

Antenna Type: Printed PCB Antenna

Frequency : WLAN 2400~2483.5 MHz

Operation Temperature:0°C~45°C/32°F~113°F

Operation Humidity: 10%~85%

Power Input: DC 5V/300mA

Maximum Transmitted Power: < 20dBm

2 PRECAUTIONS

- **Applicable system: iOS, Android.**

- Please keep you APP up to date with the latest version.
- Due to special situation may be occurred, we explicitly claims below: Not all of the Android and iOS system are compatible with APP. We will not be responsible for any issue as a result of the incompatibility.

- **Wireless safety strategy**

Smart kit only support WPA-PSK/WPA2-PSK encryption and none encryption.
WPA-PSK/WPA2-PSK encryption is recommended.

- **Cautions**

- Due to different network situation, control process may return time-out sometimes. If this situation occurs, the display between board and APP may not be the same, please do not feel confused.
- Smart Phone camera needs to be 5 million pixels or above to make sure scan QR code well.
- Due to different network situation, sometimes, request time-out could happen, thus, it is necessary to do network configuration again.
- The APP system is subject to update without prior notice for product function improvement. The actual network configuration process may be slightly different from the manual, the actual process shall prevail.
- Please Check The Service Website For More information.

3 DOWNLOAD AND INSTALL APP

CAUTION: The following QR code is only available for downloading APP. It is totally different with the QR code packed with unit.



Android



iOS

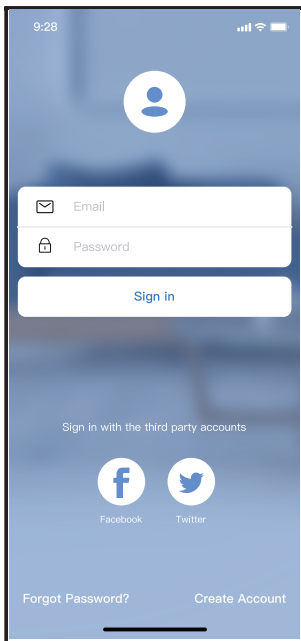
Android Phone users: scan Android QR code or go to google play, search 'Nethome Plus' App and download it.

iOS users: scan iOS QR code or go to APP Store, search 'Nethome Plus' app and download it.

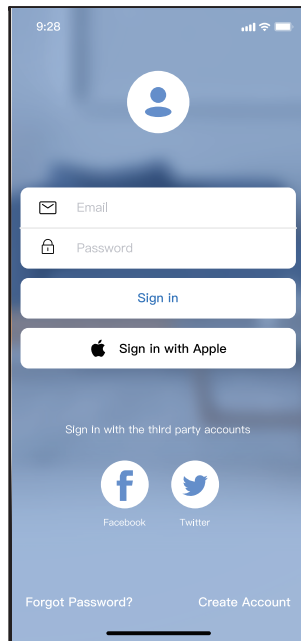
4 USER REGISTRATION

Please ensure your mobile device is connected to Wi-Fi/Wireless router. Also, the Wi-Fi/Wireless router has already connected to Internet before doing user registration and network configuration.

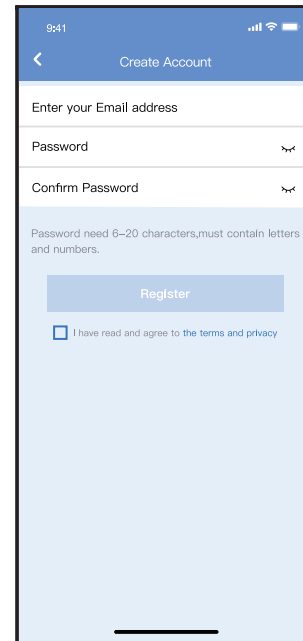
It is better to log in your email box and active your registration account by clicking link in case you forget the password. You can log in with the third party accounts.



Android



iOS



① Click "Create Account"

② Enter your email address and password, and then click "Register"

5 NETWORK CONFIGURATION

Cautions

It is necessary to forget any other around network and make sure the Android or iOS device just connect to the Wi-Fi/Wireless network you want to configure. Make sure the Android or iOS device Wi-Fi/Wireless function works well and can be connected back to your original Wi-Fi/Wireless network automatically.

Kindly reminder:

User must finish all the steps in 8 minutes after powering on Dehumidifier, otherwise you need to power on it again.

■ Using Android or iOS device to do network configuration

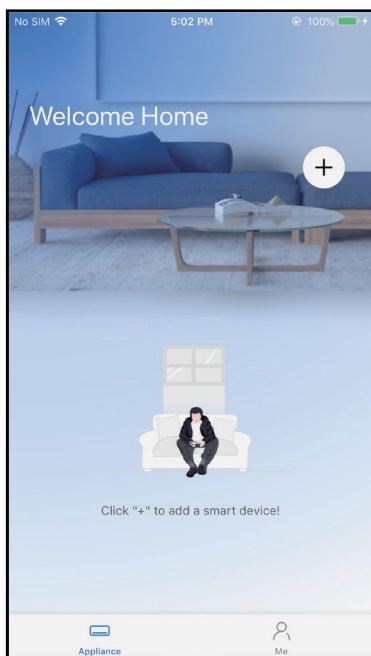
- Make sure your mobile device has already been connected to the Wi-Fi/Wireless network which you want to use. Also, you need to forget other irrelevant Wi-Fi network in case it influences your configuration process.
- Disconnect the power supply of dehumidifier.
- Connect the power supply of dehumidifier, press and hold the“FILTER”button for more than 3 seconds.
- When the unit displays “AP”, it means that the dehumidifier wireless has already entered into “AP” Mode.

Note: There are two ways to finish the network configuration:

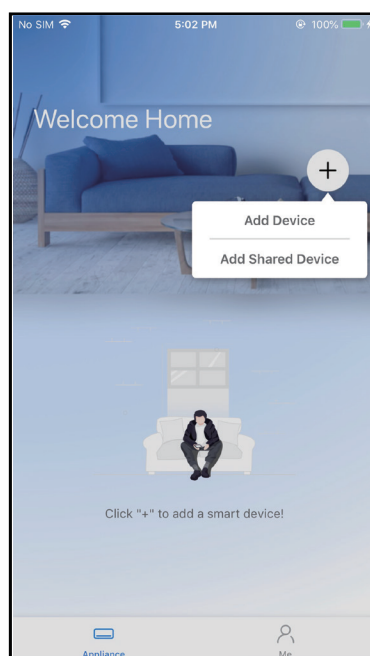
- Network configuration by Bluetooth scan
- Network configuration by select appliance type

Network configuration by Bluetooth scan

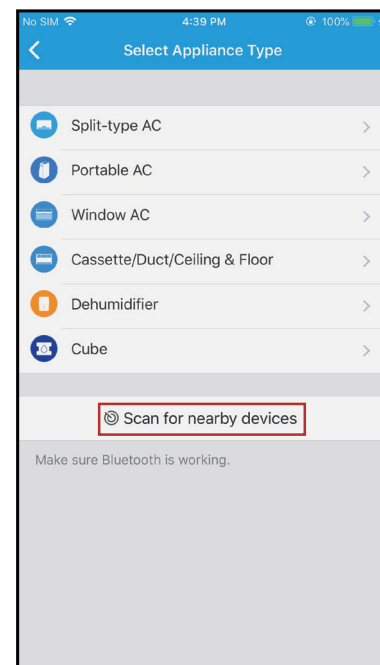
Note: Make sure the bluetooth of your mobile device is working.



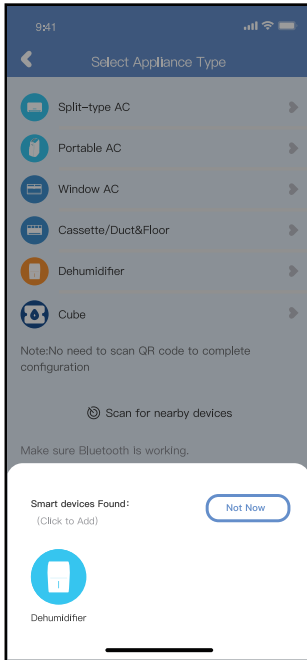
① Press “ + Add Device ”



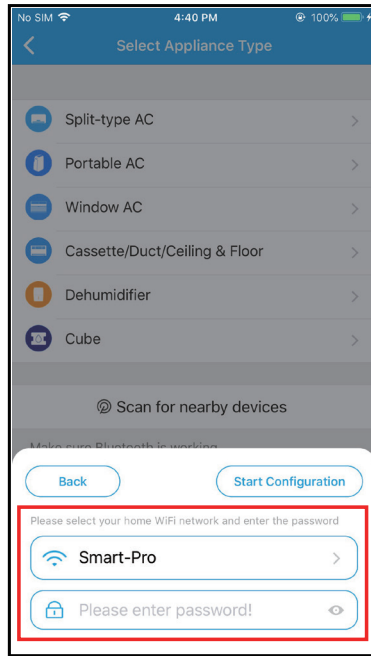
③



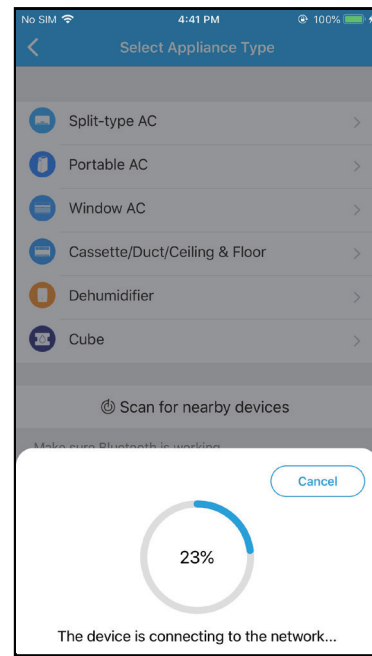
② Press “Scan for nearby devices”



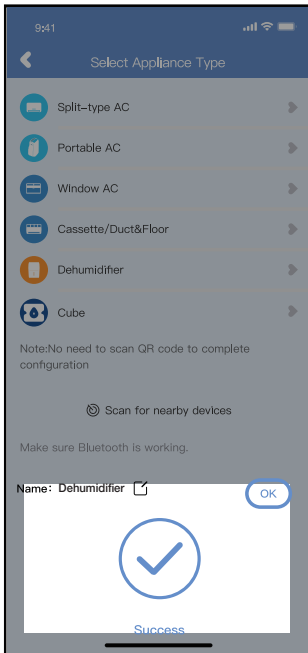
③ Wait smart devices to find, then click to add it



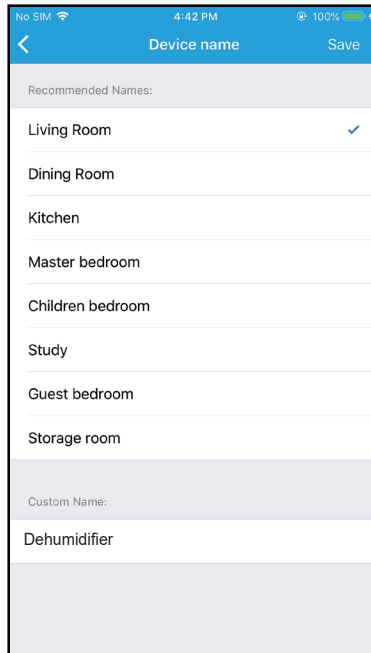
④ Select home Wi-Fi, enter the password



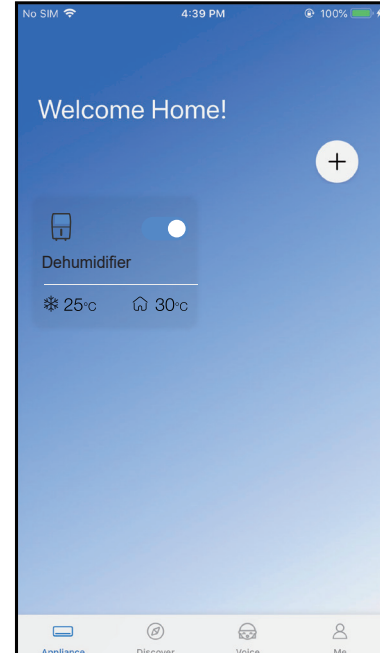
⑤ Wait connecting to the network



⑥ Configuration Success, you can modify the default name.

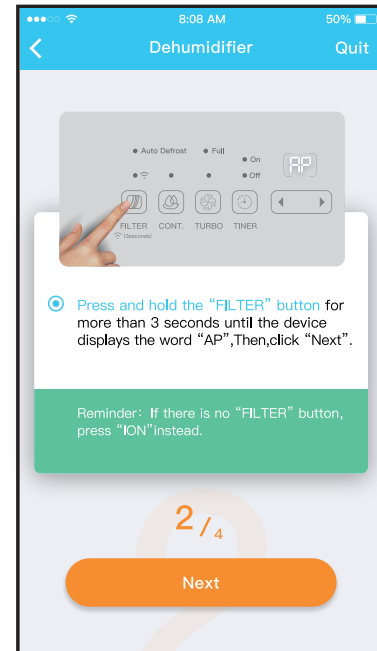
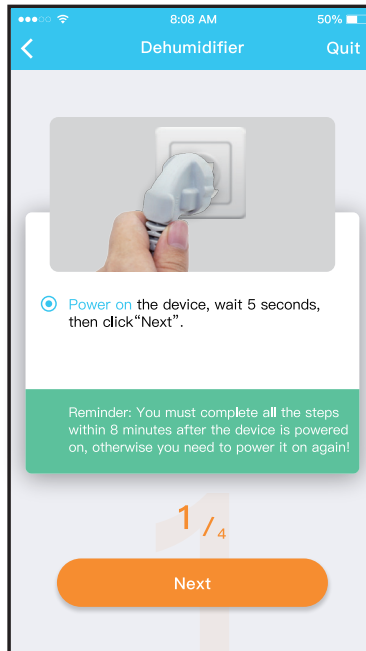
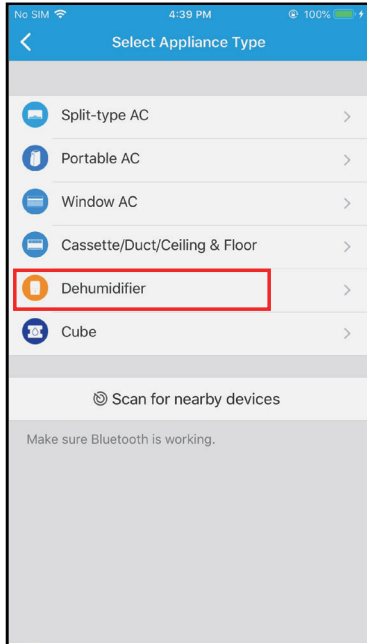


⑦ You can choose an existing name or customize a new name.



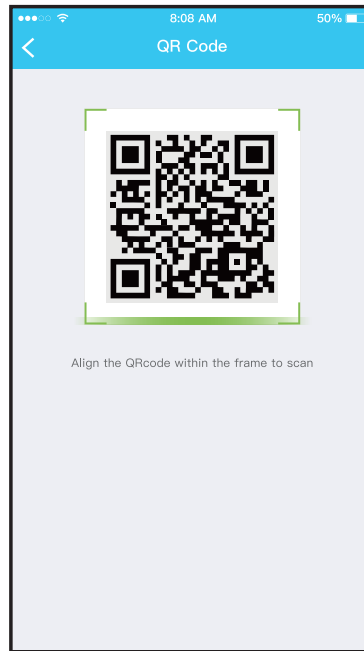
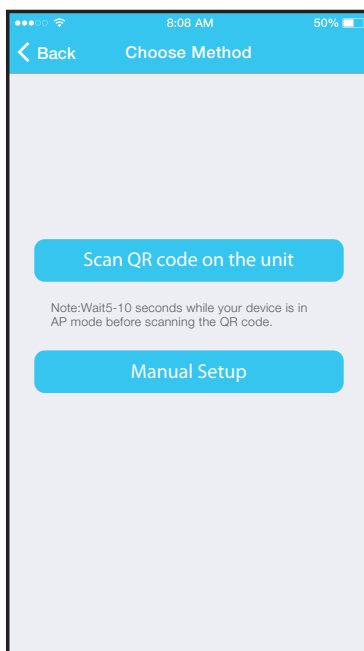
⑧ Bluetooth setting is successful

Network configuration by select appliance type :



① If the bluetooth network configuration is failure, please select the appliance type.

② Please follow the above steps to enter "AP" mode.

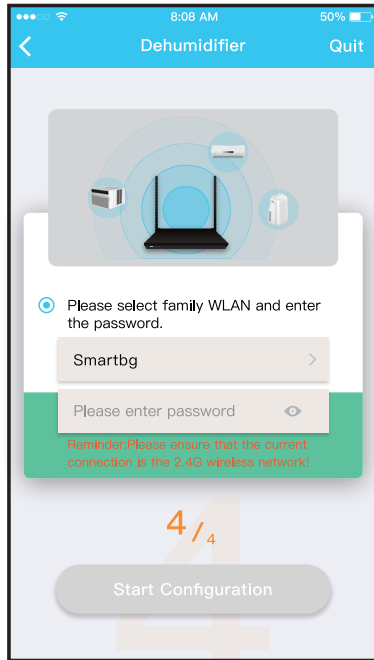


③ Choose the network configuration method.

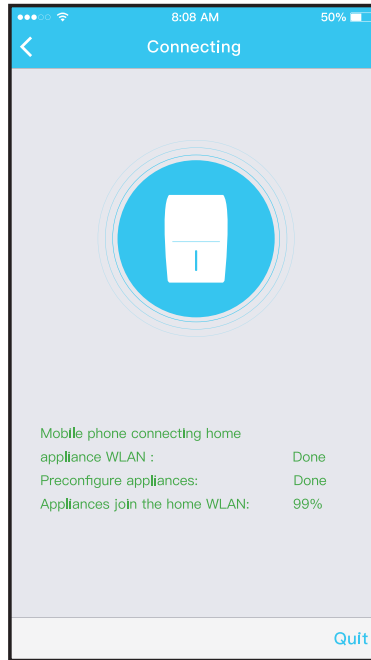
④ Choose the "Scan the QR code" method. Scan the QR code on the unit.

⑤ When choose the "Manual Setup" method(Android). Connect to the wireless network(iOS)

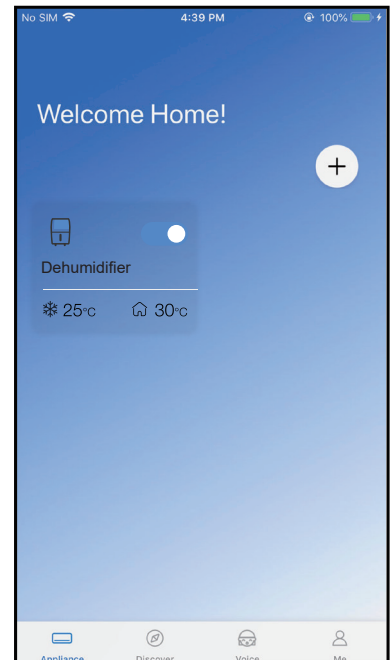
NOTE: Steps 3 and 4 are applicable to Android system only. iOS system does not need these two steps.



⑥ Please enter password



⑦ Network configuration is successful



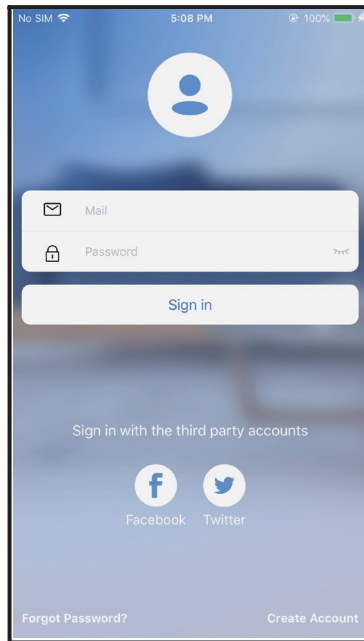
⑧ Configuration Success, you can see the device on the list.

NOTE:

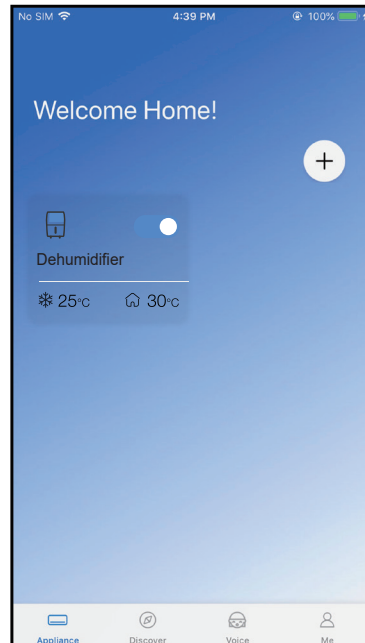
- When finishing network configuration, APP will display success cue words on the screen.
- Due to different internet environment, it is possible that the device status still display “offline” . If this situation occurs, it is necessary to pull and refresh the device list on the APP and make sure the device status become “online” . Alternatively, user can turn off the power and turn on it again, the device status will become “online” after few minutes.

6 HOW TO USE APP

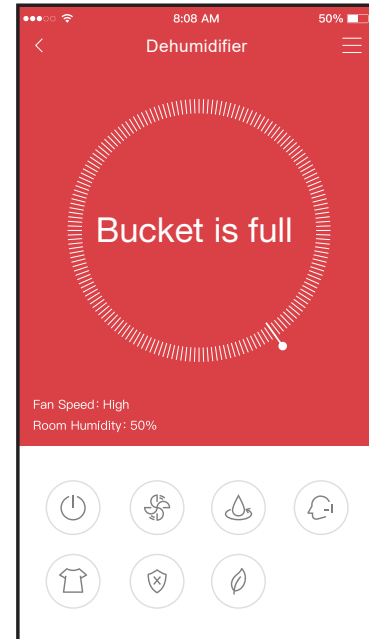
Please ensure both your mobile device and dehumidifier are connected to the Internet before using app to control the dehumidifier via internet, please follow the next steps:



① Click “ Sign in ”



② Choose the Dehumidifier.



③ Make sure the Bucket is not full and place it in right position.

From left to the right, these icons means Power, Fan, Continuous, Auto Dehumidification, Dryer, Anti-mould and Pure.

1. Power

Click Power icon to turn on/off humidifier.

2. Fan mode

Click Fan icon to activate high ,med(on some models),low fan speed.

3. Continuous mode

Click Continuous icon to activate. Press again to deactivate.

4. Auto dehumidification mode(on some models)

Click Auto dehumidification icon to activate.Press again to deactivate.

5. Dryer mode(on some models)

Click Dryer icon to activate.Press again to deactivate.

6. Anti-mould mode(on some models)

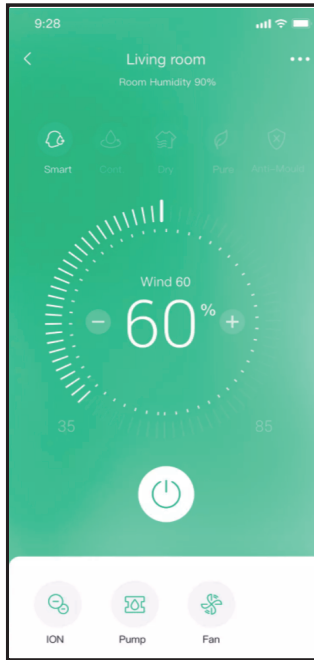
Click Anti-mould icon to activate.Press again to deactivate.

7. Pure mode(on some models)

Click Pure icon to activate.Press again to deactivate.

8. Humidity control.

The range of humidity is 35%RH-85%RH. User can add humidity by clockwise adjusting the white pointer. Similarly, user can minus humidity by anticlockwise adjusting the white pointer. The yellow pointer means current indoor humidity.



Thus, user can control dehumidifier on/off status, operation mode, target humidity, fan speed and so on.

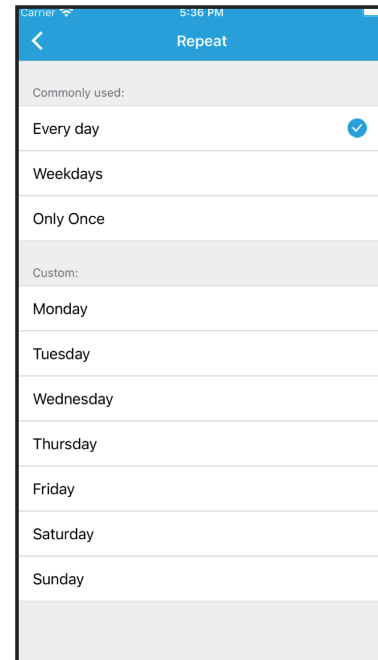
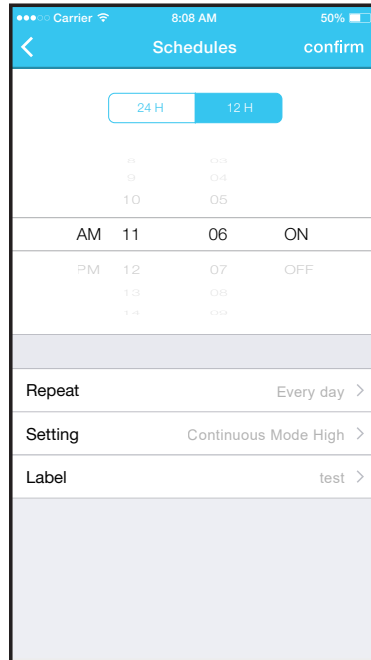
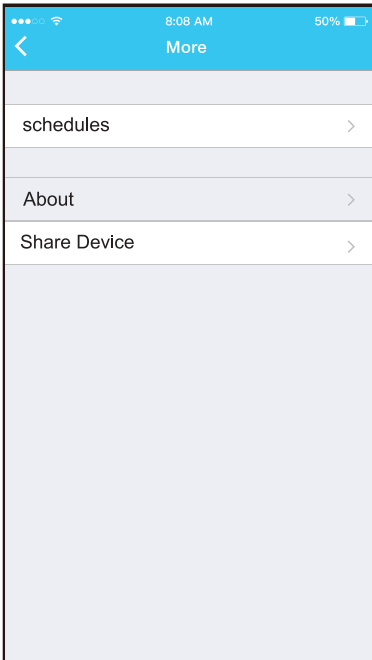
NOTE:

Not all the function of the APP is available on dehumidifier. For example: ION, Pump, Pure function, please check the user manual to find more information.

7 SPECIAL FUNCTIONS

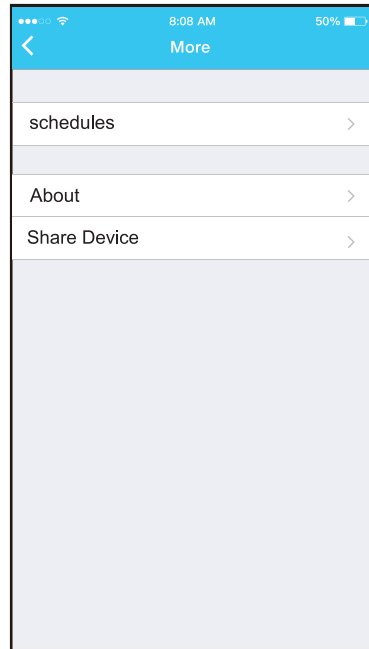
■ Schedules

Weekly, user can make an appointment to turn on or off dehumidifier on specific time. User also can choose circulation to keep the dehumidifier under schedule control every week.



■ Share Device

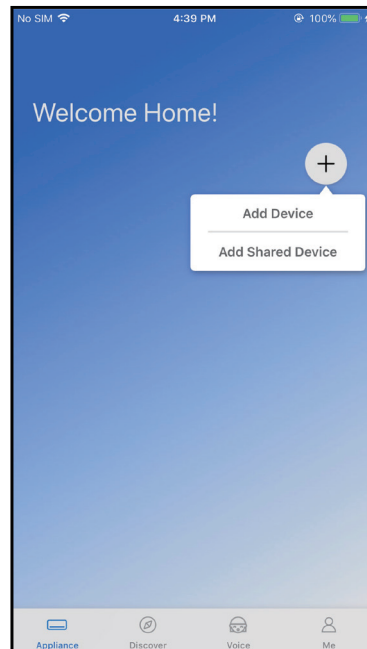
The dehumidifier can be controlled by multi-users at the same time by Share Device function.



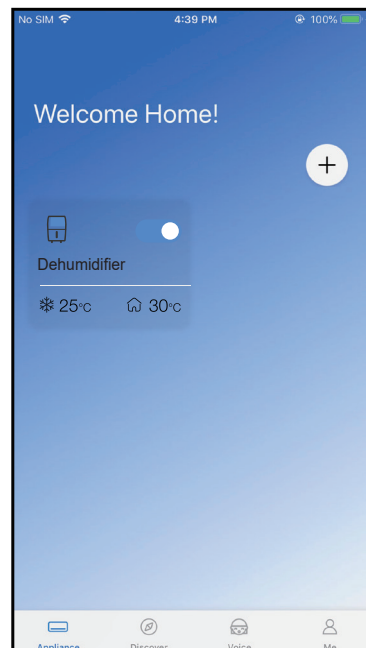
① Click “ Share device ”



② QR code display.



③ The other users must log in the “ Midea Air ” APP, then click “Add Shared Device” and scan the QR code.



④ Add the shared device.

8 APP DECLARATION

FCC ID:2ADQOMDNA21

IC:12575A-MDNA21

This device complies with Part 15 of the FCC Rules and it contains licence-exempt transmitter(s)/receiver(s) that comply with Innovation, Science and Economic Development Canada's licence-exempt RSS(s). Operation is subject to the following two conditions:

- (1) This device may not cause interference.
- (2) This device must accept any interference, including interference that may cause undesired operation of the device.

Only operate the device in accordance with the instructions supplied.

Changes or modifications to this unit not expressly approved by the party responsible for compliance could void the user's authority to operate the equipment.

This device complies with radiation exposure limits set forth for an uncontrolled environment. In order to avoid the possibility of exceeding the radio frequency exposure limits, human proximity to the antenna shall not be less than 20cm (8 inches) during normal operation.

Note: This equipment has been tested and found to comply with the limits for a Class B digital device, pursuant to Part 15 of the FCC rules. These limits are designed to provide reasonable protection against harmful interference in a residential installation. This equipment generates, uses and can radiate radio frequency energy and, if not installed and used in accordance with the instructions, may cause harmful interference to radio communications. However there is no guarantee that interference will not occur in a particular installation. If this equipment does cause harmful interference to radio or television reception, which can be determined by turning the equipment off and on, the user is encouraged to try to correct the interference by one or more of the following measures:

- Reorient or relocate the receiving antenna
- Increase the separation between the equipment and receiver
- Connect the equipment into an outlet on a circuit different from that to which the receiver is connected

Company will not be liable for any issues and problems caused by Internet, Wi-Fi/ Wireless Router and Smart Devices. Please contact the original provider to get further help.

NOTE:

All the illustrations in the manual are for explanation purpose only. Your unit may be slightly different. The actual shape shall prevail.

Due to ongoing product improvements, specifications and dimensions are subject to change and correction without notice or incurring obligations. Determining the application and suitability for use of any product is the responsibility of the installer. Additionally, the installer is responsible for verifying dimensional data on the actual product prior to beginning any installation preparations.

Incentive and rebate programs have precise requirements as to product performance and certification. All products meet applicable regulations in effect on date of manufacture; however, certifications are not necessarily granted for the life of a product. Therefore, it is the responsibility of the applicant to determine whether a specific model qualifies for these incentive/rebate programs.



"This product complies with all California product labeling laws including, but not limited to, the Safe Drinking Water and Toxic Enforcement Act of 1986, more commonly known as Proposition 65."

1900 Wellworth Ave., Jackson, MI 49203 • Ph. 517-787-2100 • www.marsdelivers.com

